

France - BNP PARIBAS Banks

Has GVD NVR M600 with Pelco Sarix and ACTi MP cameras, with pre-built modbus IO module integrated with alarm systems for 24x7-based IP video surveillance.



Taiwan - Taipei 101

Upgrades Taipei 101's IP video surveillance to a robust system with GVD HD NVR teamed up with Arecont Vision MP cameras



Hong Kong - Samsonite Stores

Get protection from GVD HD NVRs and ADT megapixel IP cameras on a 24x7 Basis.



Tunisia - Airbus Factory

Gets fully protected by the MESSOA megapixel IP cameras connected to GVD HD NVR by the world's leading manufacturer of commercial jetliners and military airlifters.



Selected Customer



ONVIF Driving network video through global standardization

Taipei Headquarters

Tel: +886-2-2516-6001
Fax: +886-2-2516-6201
Address: 9F., No.4, Sec. 3, Minquan E. Rd., Taipei City 104, Taiwan
Email: sales@gvddigital.com support@gvddigital.com

USA Office

Tel: +1-972-831-1600
Address: 13988 Diplomat Dr., Suite 180, Dallas, TX 75234
Email: sales-usa@gvddigital.com

India Office

Tel: +91-9899070816
Address: 791, Udyog Vihar, Phase V, Gurgaon 122016 (Haryana)
Email: sales-asia@gvddigital.com



2015 - 2016 v1

A Whole New VMS IP Platform

- Scalable Platforms: Better expansion and flexible systems
- HD Empowerment : Better performance and advanced software
- Open Platforms: Prefect integration with third-party systems
- Reliable Systems : Better cost saving and secure design
- Turnkey Solution : All in one system and easy installation
- Total Solutions : Wider application and market leading products

GVD Total Solutions

HD Empowerment

Scalable video platforms that allow easy project scale-up through flexible add-ons.

Products with VMS Platform (300~5000ch) and CMS Platform (64~300ch) that meet your needs.



The Best Solution for IP Surveillance

Fully Integrated Solution

Enterprise : 300 - 5,000ch

Governments
Homeland Security
City Surveillance
Airports / Seaports
Mining, etc.

Multi Sites : 64 - 300ch

Campus
Hotels
Banks
Retail Chain Stores
Shopping Malls, etc.

Single Site : 4 - 64ch

Banking
Retailing
Office Building, etc.

CCTVWall
VMS
CMS
Failover
Backup

ONVIF
RTSP
Modbus
PLC

LPR
ATM
ACS
POS
IVAS

Alarm
BAS
Fire
PSIM
Wireless

iPhone, iPad
Android Phone/Pad
IE Browse

3 EASY

Easy Installation

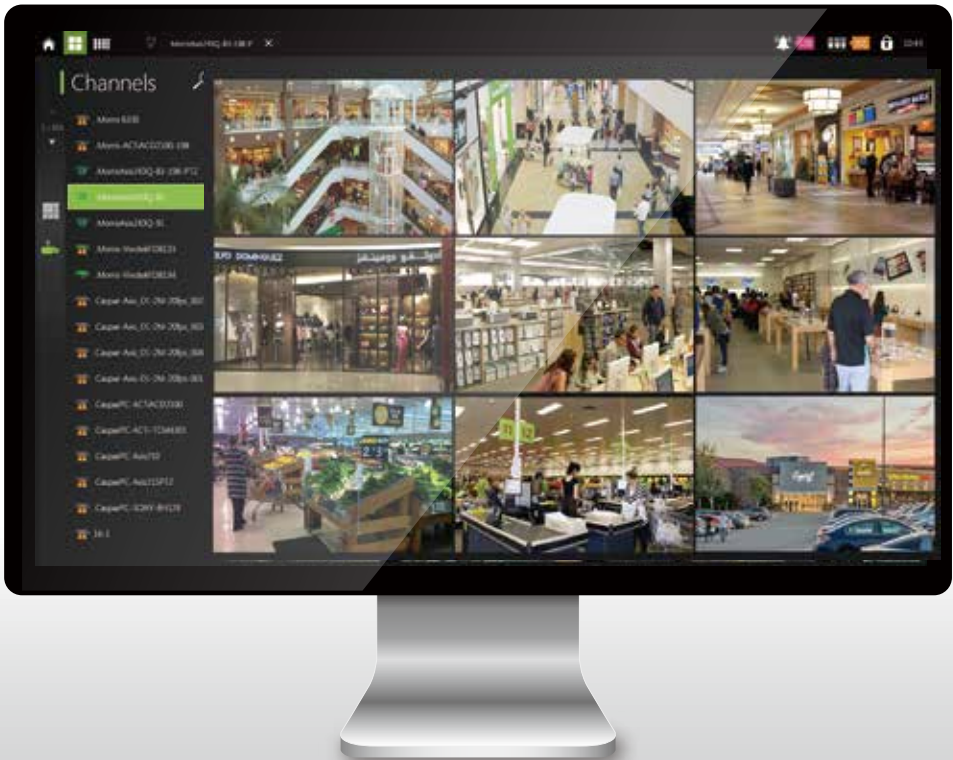
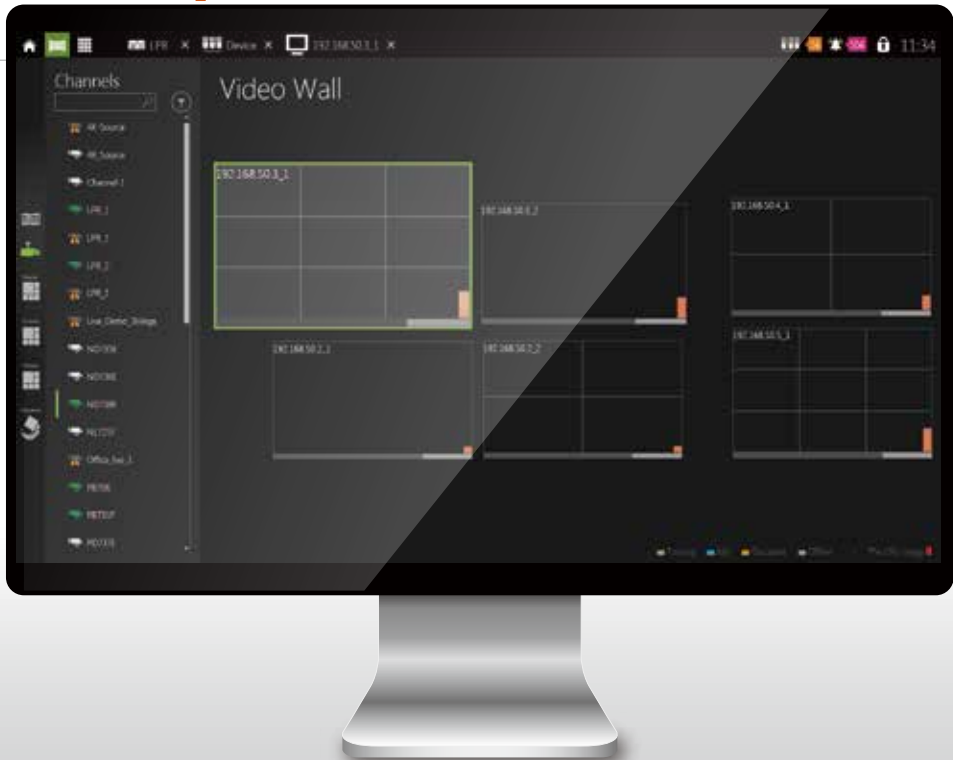
- All Devices can Automatically Sign in to the System (Plug-n-play).

Easy Operation

- Intuitive GUI
- New Intelligent E-map
- Massive Cameras Tag Management
- Seamless Streaming Display
- Video Wall Synchronous Display

Easy Maintenance

- Dual Watchdog (HW/SW)
- Restore to Last Right Setting



16ch Full HD Real-time Display on Dual Monitors

GVD advanced software features MVP, ROI, Turbo Mode Plus functions to offer powerful performance video recording and display for 16ch Full HD real-time display on dual monitors.



Smooth Video with Exclusive Video Playout Control

Built-in Exclusive Video Playout Control technology that enables smooth video and limiting of video quality degradation for different situations like uniform Camera Time Stamp, Unstable Network Conditions.



Powerful Alarm Management

Alarm notification by Pop-up, E-mail, DI/DO (Modbus Support) when video loss, sensor triggered, HDD crashed, system crashed, abnormal transaction, e-fence, video motion detection, etc.



Supports Onvif Profile S & Onvif

- GVD PLUS 1:** GVD offers better and more flexible PTZ control than ONVIF
- GVD PLUS 2:** GVD advanced Motion Detection integration surpasses ONVIF
- GVD PLUS 3:** GVD provides Generic RTSP function so users can get video streaming even without Onvif

Product Specifications

VMS / CMS Platform					HD NVR Enterprise			HD NVR Standalone				Mobile NVR		LPR NVR
<div><div></div><div></div><div></div><div></div></div>					<div><div></div><div></div><div></div></div>			<div><div></div><div></div><div></div><div></div></div>				<div><div></div><div></div></div>		<div><div></div></div>
Item	VMS Manager / Video Wall Decoder	Backup Server (Rackmount)	Failover Server (Rackmount)	CMS Manager	Rackmount Enterprise NVR	Rackmount Enterprise NVR	Rackmount Enterprise NVR	Super Standalone NVR (Rackmount)	Super Standalone NVR (Rackmount)	Standalone NVR	Mini Standalone NVR	Mobile NVR (Anti-Vibration)	Mobile NVR (Anti-Vibration)	LPR NVR (Rackmount)
CPU	Core i7-2600	Xeon® E3-1240	Xeon® E3-1220	Core i7-2600	Xeon® E3-1240	Xeon® E3-1220	Xeon® E3-1220	Core™ i5-2400 / Pentium G2120	Core™ i7-2600** / Core™ i5-2400	Core™ i3-3220	Celeron® G1840	Celeron® 847E	Celeron® 847E	Core™ i7-2600 / Core™ i5-2400
IP Camera License	3,000ch	128ch	128ch	1,024ch	64ch, 96ch, 128ch	64ch, 96ch	48ch, 64ch,	24ch, 32ch, 48ch, 64ch	16ch, 24ch, 32ch, 48ch	12ch***, 16ch, 24ch, 32ch	4ch, 8ch, 12ch	4ch	8ch	24/4 , 24/8 , 48/8 (IP Camera/ LPR Channel)
Local Display Resolution	D1~ 20MP 1740 fps	---	---	D1~ 20MP 2160 fps	D1~ 20MP 480 fps	D1~ 20MP 480 fps	D1~ 20MP 480 fps	D1~ 20MP 960 fps / 480 fps	D1~ 20MP 960 fps / 1080 fps	D1~ 20MP 810 fps	D1~ 20MP 270 fps	D1~ 20MP 210 fps	D1~ 20MP 210 fps	D1~ 20MP 720 fps
Recording Resolution	---	D1, 1.3~20MP	D1, 1.3~20MP	---	D1, 1.3~20MP	D1, 1.3~20MP	D1, 1.3~20MP	D1, 1.3~20MP	D1, 1.3~20MP	D1, 1.3~20MP	D1, 1.3~20MP	D1, 1.3~20MP	D1, 1.3~20MP	D1, 1.3~20MP
E-map	Mapping Cameras and NVRs (Static Map, Google Map)*	---	---	Mapping Cameras and DI/DO Points, Map Hyperlink	Mapping Cameras and DI/DO Points, Map Hyperlink	Mapping Cameras and DI/DO Points, Map Hyperlink	Mapping Cameras and DI/DO Points, Map Hyperlink	Mapping Cameras and DI/DO Points, Map Hyperlink	Mapping Cameras and DI/DO Points, Map Hyperlink	Mapping Cameras and DI/DO Points, Map Hyperlink	Mapping Cameras and DI/DO Points, Map Hyperlink	Mapping Cameras and DI/DO Points, Map Hyperlink	Mapping Cameras and DI/DO Points, Map Hyperlink	Mapping Cameras and DI/DO Points, Map Hyperlink
PTZ Control	PTZ Control, Preset Point, Patrol, Digital PTZ*	---	---	PTZ Control, Preset Point, Patrol, Digital PTZ	PTZ Control, Preset Point, Patrol, Digital PTZ	PTZ Control, Preset Point, Patrol, Digital PTZ	PTZ Control, Preset Point, Patrol, Digital PTZ	PTZ Control, Preset Point, Patrol, Digital PTZ	PTZ Control, Preset Point, Patrol, Digital PTZ	PTZ Control, Preset Point, Patrol, Digital PTZ	PTZ Control, Preset Point, Patrol, Digital PTZ	PTZ Control, Preset Point, Patrol, Digital PTZ	PTZ Control, Preset Point, Patrol, Digital PTZ	PTZ Control, Preset Point, Patrol, Digital PTZ
Viewing Operation	ROI (Region of Interest), Tour	---	---	ROI (Region of Interest), Tour	ROI (Region of Interest), Tour	ROI (Region of Interest), Tour	ROI (Region of Interest), Tour	ROI (Region of Interest), Tour	ROI (Region of Interest), Tour	ROI (Region of Interest), Tour	ROI (Region of Interest), Tour	ROI (Region of Interest), Tour	ROI (Region of Interest), Tour	ROI (Region of Interest), Tour
Synchronous Playback	---	---	---	up to 16ch	up to 16ch	up to 16ch	up to 16ch	up to 16ch	up to 16ch	up to 16ch	up to 12ch	up to 4ch	up to 8ch	up to 16ch
Video Export	Video Export via USB (Supports .avi and .ava Format)*	---	---	Video Export via USB (Supports .avi and .ava Format), Digital Watermark	Video Export via USB (Supports .avi and .ava Format), Digital Watermark	Video Export via USB (Supports .avi and .ava Format), Digital Watermark	Video Export via USB (Supports .avi and .ava Format), Digital Watermark	Video Export via USB (Supports .avi and .ava Format), Digital Watermark	Video Export via USB (Supports .avi and .ava Format), Digital Watermark	Video Export via USB (Supports .avi and .ava Format), Digital Watermark	Video Export via USB (Supports .avi and .ava Format), Digital Watermark	Video Export via USB (Supports .avi and .ava Format), Digital Watermark	Video Export via USB (Supports .avi and .ava Format), Digital Watermark	Video Export via USB (Supports .avi and .ava Format), Digital Watermark
Intelligent Video Analytics	---	---	---	Missing/ Foreign Object, E-fence, VMD, People counting	Missing Object, Foreign Object, E-fence, Video Motion Detection	Missing Object, Foreign Object, E-fence, Video Motion Detection	Missing Object, Foreign Object, E-fence, Video Motion Detection	Missing Object, Foreign Object, E-fence, Video Motion Detection	Missing Object, Foreign Object, E-fence, Video Motion Detection	Missing Object, Foreign Object, E-fence, Video Motion Detection	Missing Object, Foreign Object, E-fence, Video Motion Detection	Missing Object, Foreign Object, E-fence, Video Motion Detection	Missing Object, Foreign Object, E-fence, Video Motion Detection	License Plat Recognition from M4006-LPR
Alarm Notification	Pop-up	---	---	Pop-up, E-mail, DI/DO, Trigger Recording	Pop-up, E-mail, DI/DO, Trigger Recording	Pop-up, E-mail, DI/DO, Trigger Recording	Pop-up, E-mail, DI/DO, Trigger Recording	Pop-up, E-mail, DI/DO, Trigger Recording	Pop-up, E-mail, DI/DO, Trigger Recording	Pop-up, E-mail, DI/DO, Trigger Recording	Pop-up, E-mail, DI/DO, Trigger Recording	Pop-up, E-mail, DI/DO, Trigger Recording	Pop-up, E-mail, DI/DO, Trigger Recording	Pop-up, E-mail, DI/DO, Trigger Recording
LAN Port	Gigabit LAN (RJ45, On-board Teaming) x2	Gigabit LAN (RJ45, On-board Teaming) x2, Dedicated IPMI x1	Gigabit LAN (RJ45, On-board Teaming) x2, Dedicated IPMI x1	Gigabit LAN (RJ45, On-board Teaming) x2	Gigabit LAN (RJ45, On-board Teaming) x2, Dedicated IPMI x1	Gigabit LAN (RJ45, On-board Teaming) x2, Dedicated IPMI x1	Gigabit LAN (RJ45, On-board Teaming) x2, Dedicated IPMI x1	Gigabit LAN (RJ45) x2	Gigabit LAN (RJ45) x2	Gigabit LAN (RJ45) x2	Gigabit LAN (RJ45) x2	Gigabit LAN (RJ45) with POE (IEEE 802.3af) x 4	Gigabit LAN (RJ45) with POE (IEEE 802.3af) x 8	Gigabit LAN (RJ45) x2
Video Port	VGAx1, HDMIx1, DVI-Dx1 (Support Two Video Outputs Simultaneously)	VGAx 1	VGAx 1	VGAx1, HDMIx1, DVI-Dx1 (Support Two Video Outputs Simultaneously)	DVI-Ix 2	DVI-Ix 2	DVI-Ix 2	VGAx1, HDMIx2 (Support Two Video Outputs Simultaneously)	VGAx1, DVI-Dx1, HDMIx1 (Support Two Video Outputs Simultaneously)	VGAx1, HDMIx2 (Support Two Video Outputs Simultaneously)	HDMI x1, Display Port x1	VGAx1, HDMIx1, DVI-Dx1 (Support Two Video Outputs Simultaneously)	VGAx1, HDMIx1, DVI-Dx1 (Support Two Video Outputs Simultaneously)	VGA x 1, HDMI x 2 (Support Two Video Outputs Simultaneously)
Hard Disk Trays (Bays)	1 pcs (SATA2)	24 pcs	16 pcs	1 pcs (SATA2)	24 pcs (Hot Swap)	16 pcs (Hot Swap)	12 pcs (Hot Swap)	8 pcs	6 pcs	4 pcs	2 pcs (2.5") or 1 pcs (3.5")	1 pcs with a Key Lock (Hot Swap)	2 pcs with a Key Lock (Hot Swap)	6 pcs
Storage Capacity	500 GB	6 TB	6 TB	500 GB	6 TB	6 TB	6 TB	6 TB	6 TB	4 TB	1 TB (2.5") or 4 TB (3.5")	1 TB (2.5" HDDx1) or 256GB (2.5" SSDx1)	2 TB (2.5" HDDx2) or 512GB (2.5" SSDx2)	6 TB
RAID Level	---	RAID 0, 1, 5, 6	RAID 0, 1, 5, 6	---	RAID 0, 1, 5, 6	RAID 0, 1, 5, 6	RAID 0, 1, 5, 6	RAID 0, 1, 5, 6 (Option)	RAID 0, 1, 5, 6 (Option)	***RAID 0, 1, 5	---	---	---	RAID 0, 1, 5, 6 (Option)
Power Voltage	100~240 Vac, 50-60 Hz	100~240 Vac, 50-60 Hz (Redundant)	100~240 Vac, 50-60 Hz (Redundant)	100~240 Vac, 50-60 Hz	100~240 Vac, 50-60 Hz (Redundant)	100~240 Vac, 50-60 Hz (Redundant)	100~240 Vac, 50-60 Hz (Redundant)	100~240 Vac, 50-60 Hz	100~240 Vac, 50-60 Hz	100~240 Vac, 50-60 Hz	100~240 Vac, 50-60 Hz	9~36Vdc (Vehicle Ignition Power Ma—gement)	9~36Vdc (Vehicle Ignition Power Ma—gement)	100~240 Vac, 50-60 Hz
Power Consumption	127W	575W	485W	127W	575W	485W	385W	127W	127W	150W	30W	20W (Without POE Consumption - Max. 15.4W x 4POE = 60.16W)	20W (Without POE Consumption - Max. 15.4Wx 8POE = 123.2W)	127W
Operation Temperature	0°C ~ 40°C (32°F ~ 104°F)	5°C ~ 35°C (41°F ~ 95°F)	5°C ~ 35°C (41°F ~ 95°F)	0°C ~ 40°C (32°F ~ 104°F)	5°C ~ 35°C (41°F ~ 95°F)	5°C ~ 35°C (41°F ~ 95°F)	10°C ~ 35°C (50°F ~ 95°F)	0°C ~ 40°C (32°F ~ 104°F)	0°C ~ 40°C (32°F ~ 104°F)	0°C ~ 40°C (32°F ~ 104°F)	0°C ~ 35°C (32°F ~ 95°F)	-20°C ~ 55°C (-4°F ~ 131°F)	-20°C ~ 55°C (-4°F ~ 131°F)	0°C ~ 40°C (32°F ~ 104°F)
Dimensions (WxHxD)	432x106x427mm	437x178x660mm	437x132x648mm	432x106x427mm	437x178x660mm	437x132x648mm	437x89x660mm	430x98x550mm	430x98x550mm	200x205x320mm	200x73x253mm	273.8x64.8x188mm	276.4x85.3x190mm	430x98x550mm
Net Weight	7.0 Kg	34 Kg	32.7 Kg	7.0 Kg	34 Kg	32.7 Kg	23.6 Kg	9.28 Kg	9.28 Kg	5.86 Kg	1.86 Kg	3.63 Kg	5.8 Kg	9.28 Kg

*D300 doesn't support E-Map, PTZ and video export.

**only for M4006-IR

***only for M3004-IR

The specifications above are subject to change without notice